

Transformer & OLTC Maintenance



Why do we need to do OLTC maintenance?

Maintenance is a key aspect for all high voltage equipment. This ensures that the equipment life cycle is enhanced to the maximum. Safety hazards can also be reduced with appropriate maintenance and checks done on a regular basis.

Poor maintenance regime will attain cost savings initially but results in expensive repairs that may even cause production downtime.

How often do we need to conduct maintenance on OLTC?

Depending on the number of years of service or number of operations, whichever comes first, the OLTC is required to be removed for inspection. During this time the following would be carried out:-

1. Inspection of contact wear, resistors values, testing of varistors.
2. Checking of mechanical parts, gears, shafts for abnormal wear.
3. Replace with new transformer oil, on-site filtration, on-site oil tests.
4. Testing of protective relay & testing of TAPCON.
5. Replacement of consumable parts (Eg. Head gaskets, relay gaskets, Motor Drive gaskets where applicable).
6. Updating with new part



For enquires please contact:

Aspectus Engineering Services Pte. Ltd.

50 Ubi Ave 3 #04-23, Frontier S(408866) / Tel: 6242 3281/6289 2671 / Fax: 6242 8251

Email: aspectus@singnet.com.sg / Website: www.aspectus.com.sg

Transformer & OLTC Maintenance

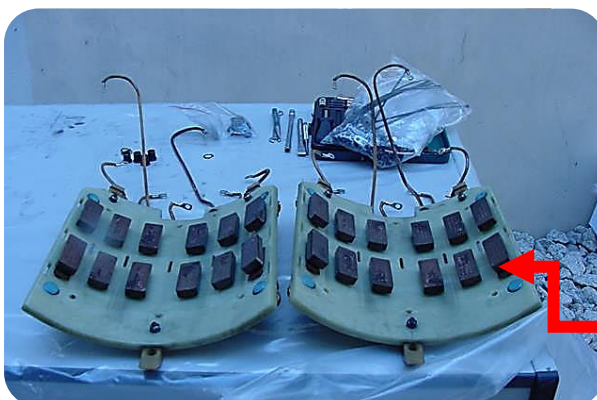
Key Points on Maintenance:



Build-up of carbon to be removed –
Restore di-electric strength of
insulation



Disassembled OLTC for checks on
voltage control devices



Contacts for checks
and measurement



For enquires please contact:

Aspectus Engineering Services Pte. Ltd.

50 Ubi Ave 3 #04-23, Frontier S(408866) / Tel: 6242 3281/6289 2671 / Fax: 6242 8251

Email: aspectus@singnet.com.sg / Website: www.aspectus.com.sg

Transformer & OLTC Maintenance

MR OLTC / Transformer Maintenance Services



Lifting of the OLTC from the transformer



OLTC upon removal from its compartment. Due to long time operation, Transformer insulating cylinder was thickened with carbon residue from breakdown of insulation oil.



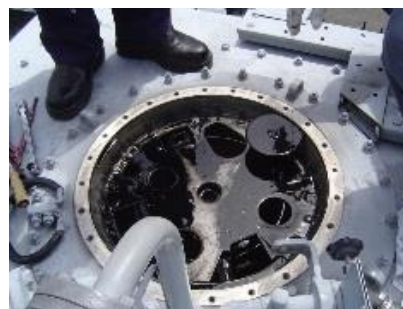
Investigation of contact wear.



Transformer internal cylinder of OLTC Before and After maintenance.



After maintenance, alignment and measurements, the OLTC is being lowered into compartment and put back into operation.



Transformer OLTC Tank Top Before and After maintenance.



For enquires please contact:

Aspectus Engineering Services Pte. Ltd.

50 Ubi Ave 3 #04-23, Frontier S(408866) / Tel: 6242 3281/6289 2671 / Fax: 6242 8251

Email: aspectus@singnet.com.sg / Website: www.aspectus.com.sg